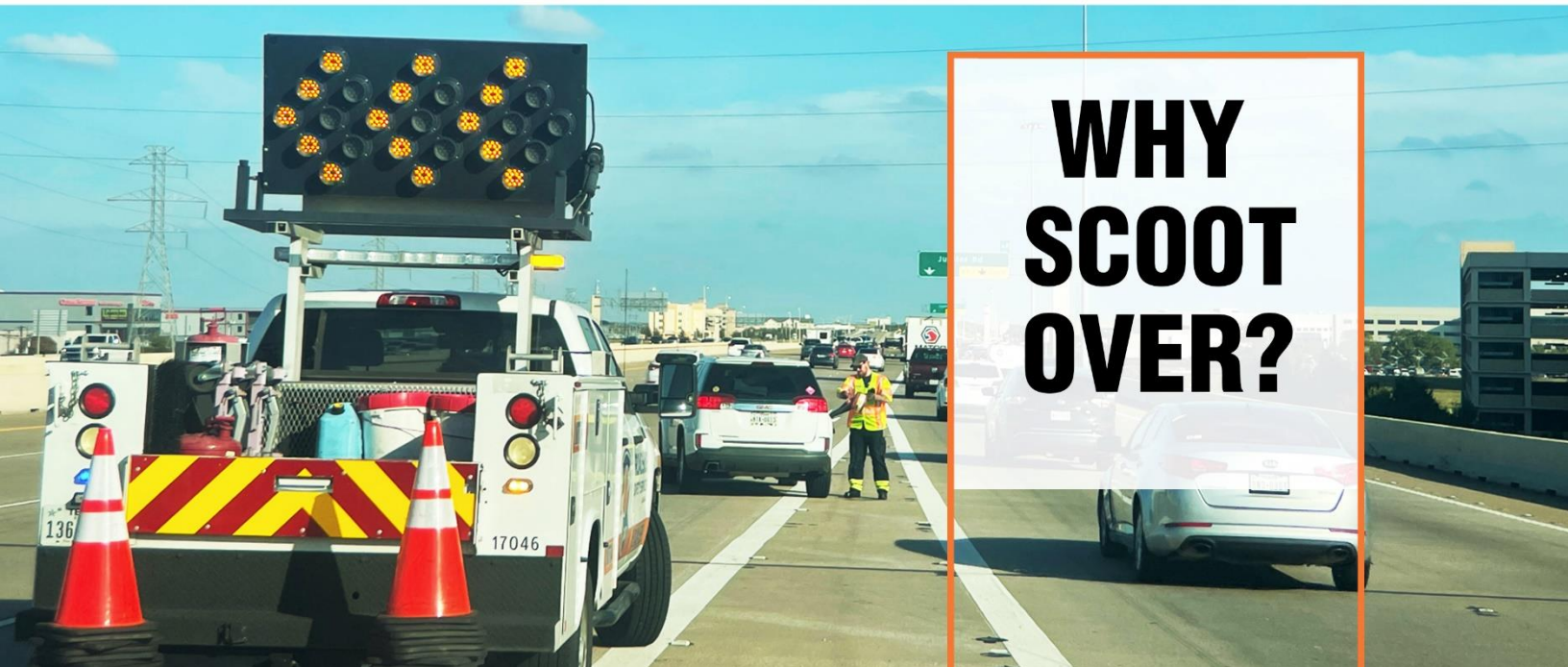


TOLLTAG INSIDER



WHY SCOOT OVER?

September 2023

We all rely on first responders, NTTA's Roadside Safety Services (RSS) and our Maintenance team to keep our roads safe – but they need help from YOU to do their jobs and stay safe.

The **Move Over or Slow Down Law** requires drivers on any highway to move over one lane or slow to 20 mph below the posted speed limit when approaching emergency vehicles, first responders, tow trucks, utility service vehicles or other highway construction or maintenance vehicles that are using visual signals or have flashing lights activated while on the shoulder of the road.

In Texas, the Move Over or Slow Down Law includes NTTA work crews and RSS. As a result, the law requires drivers to slow down or move over when they see any NTTA vehicle with its lights activated or our Maintenance crews picking up litter on the side of the road.

Drivers who fail to give emergency and work crews space to safely do their jobs can receive a ticket with a fine of up to \$200. If there is a crash that causes injury to a worker, drivers can be fined up to \$2,000.

To prioritize safety and avoid fines, don't make excuses or hesitate. Move over or slow down for all these vehicles, which are there for your safety.